

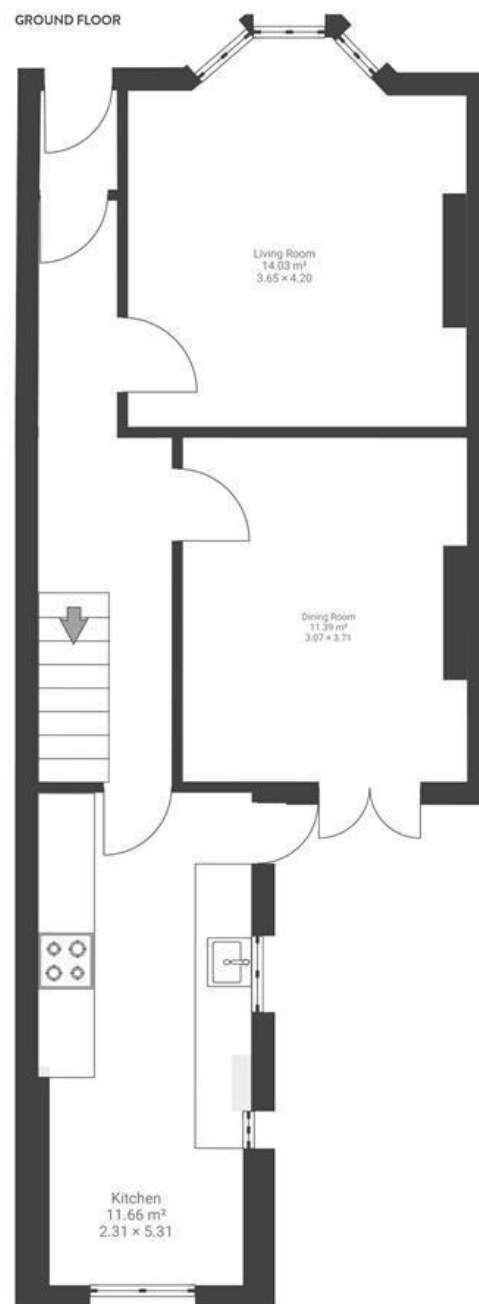
Whitehall Road

EASTON

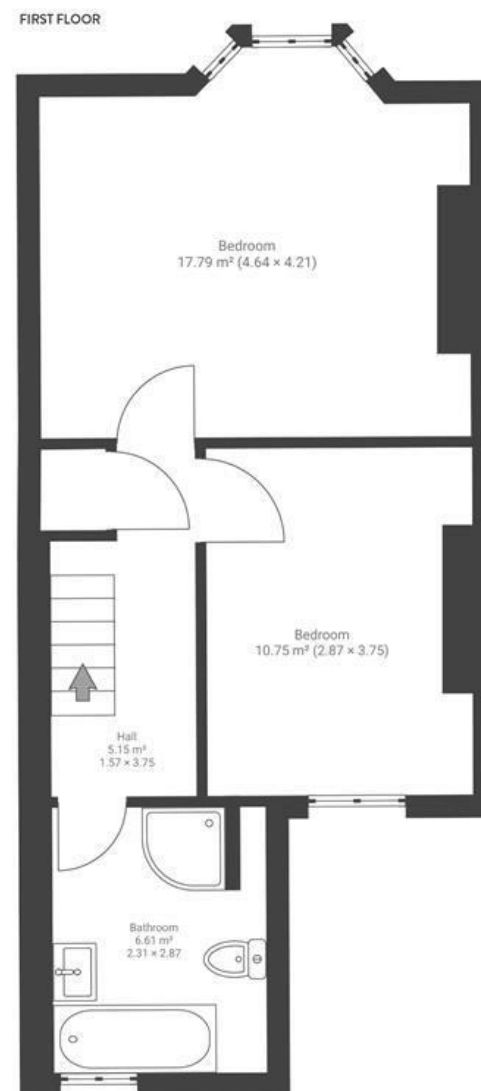
APPROXIMATE FLOOR AREA
90 SQM / 968 SQFT



GROUND FLOOR



FIRST FLOOR



Boardwalk

Whitehall Road

EASTON, BRISTOL

£

£370,000



BS5 9BG

zzz

2 Bedrooms



1 Bathrooms

"We've loved living here. We look out onto trees at the front and back so it feels spacious and private. We walk or cycle everywhere as are so close to Church Rd, St Marks Rd shops and the leafy, beautiful cycle path. St George Park is a huge favourite for us followed by a coffee in Orchard Café. There are so many great independent pubs, cafes and of course The Bristol Loaf within 5 mins walk. It's an art loving community with great local events."

